

Site Info

- Municipality:
City of Cincinnati
- Land Area: 2.514
- Zoning: MG
- Year Built: 1987
- Building Size: 10,931

- Office: 1,500 SF
- Private Entry
- 3 Private Offices
- 1 Bullpen Area
- Storage Area
- Shared Restrooms
- Good Access to I-75

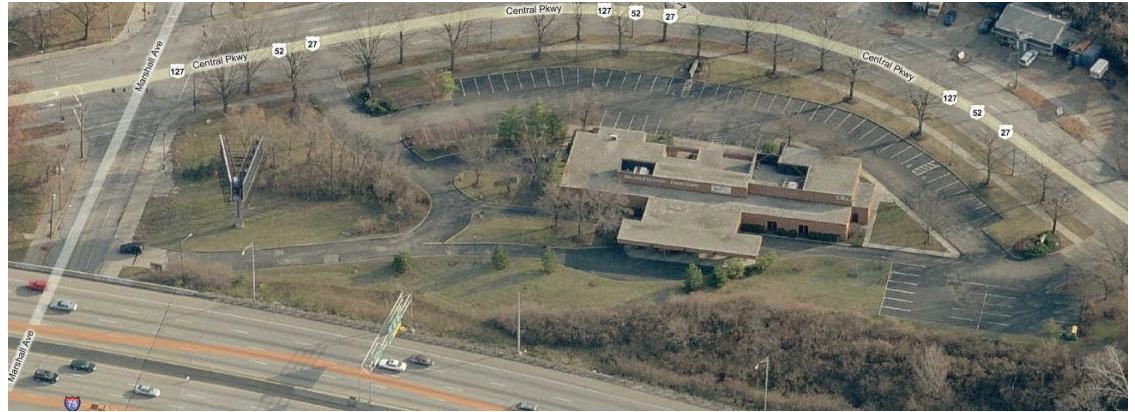
- Floor Plan & Site Plan
On File

- Asking Rate:
\$12/psf NNN

The information contained herein has been obtained from sources we deem reliable. We have no reason to doubt but don't guarantee its accuracy

For Lease

2721 Central Pkwy 45225



 = Available Area

DWYER
COMMERCIAL REAL ESTATE LLC

2928 Colerain Ave Ste 100
Cincinnati OH 45225

Contact:
John Dwyer

513.784.1776
www.dwyercre.com